

# KNOCKFAD HOUSE

KNOCKFAD, BALLYHAISE, COUNTY CAVAN, IRELAND

DAMIEN MURTAGH ARCHITECTS

The Knockfad House's evolution was in direct response to its site, the client's brief and its rural setting. Damien Murtagh Architects was asked to design a house for modern living that would take advantage of its raised rural setting while always remaining sympathetic to its environment and the local architecture. For this reason a blend of traditional building forms together with subtle modern interventions were adopted, lending an understated feel to this sensitive project.

The layout of the building is defined by three distinct cores: the sleeping, circulation and living quarters. On approach to the house a long linear stone façade structure is broken only by the soft white lines of the juxtaposed oval form of the garage. This area accommodates the east sleeping quarters, while also providing a sound and privacy barrier to the rest of the house from the country road.

The central circulation core, which primarily acts as a buffer zone between living and sleeping areas, has a number of additional functions. These include a greeting hall on the upper level and a library/study, which has both views and access to a tranquil garden through a large expanse of glazing, on the lower level.

The rear living core has been offset and has a 10-metre opening to take full advantage of the vast, beautiful rural landscape beyond. The kitchen/dining area is connected to the living room through a large sliding-screen wall. The ceiling form is exposed here and can be seen to run through to the living room by way of frameless glass at clerestory level above the sliding wall. The exposed ceiling continues into the sitting room, which is accessed down a series of steps within the circulation core, giving it additional height. A sizeable corner glazing element provides spectacular views of six counties in the distance.

The harmonious synthesis of local stone, render, pre-aged copper, mahogany and natural slate forms a most positive rural intervention. The Knockfad House is a highly energy-efficient A-rated dwelling, with a wood-pellet burner, solar panelling and Kingspan rigid insulation installed throughout.

*Opposite North face in late evening*



2



3

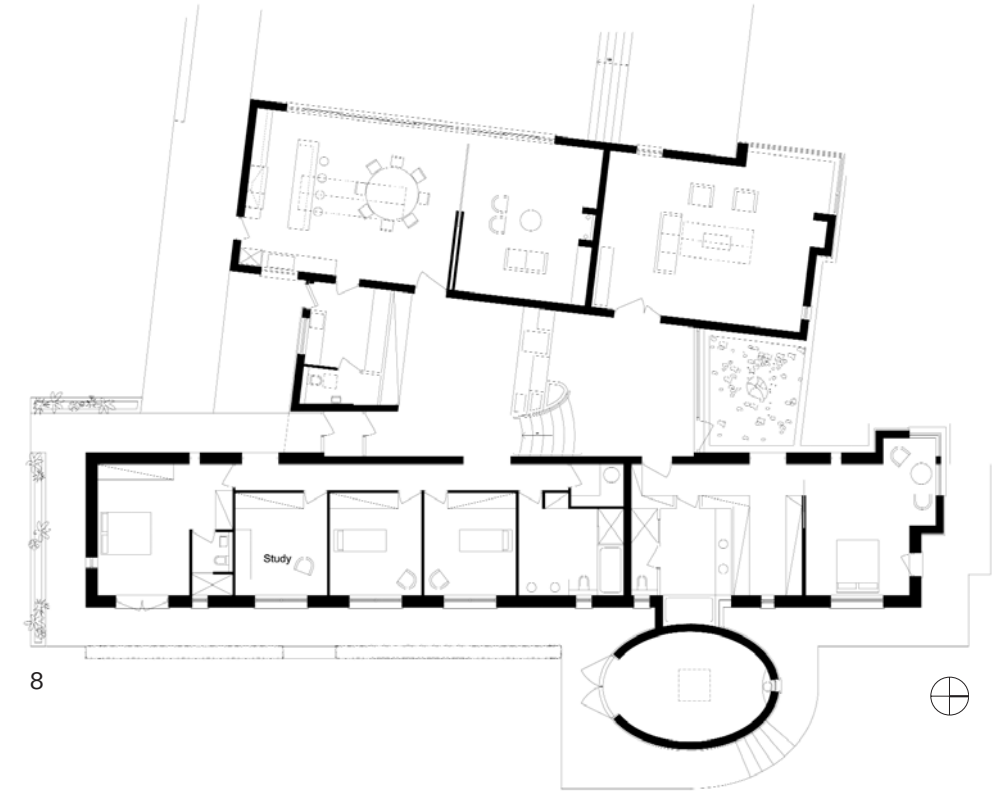


4



5

6



8



7

- 2 Exposed ceiling
- 3 Corner glazing and fireplace
- 4 Beautiful walnut cabinetry
- 5 Country kitchen
- 6 Tall copper window
- 7 Master bedroom
- 8 Ground floor plan

Photography: to come